



Feedback

In the space below, describe the topic(s) in which you encountered the most difficulty from tonight's material (leave blank if you found the difficulty to be minimal).

Will you have the homework assignment completed by next class?

Yes No

Will you listen to, in whole or in part, the lecture recording for today's lecture?

Yes No **don't need to today*

Sample Questions From Learning Objectives

1) Find the x-intercepts of the following parabola: $f(x) = 2(x - 3)^2 - 8$

Show that you have set $f(x) = 0$

$$\begin{aligned} 8 &= 2(x-3)^2 \\ 4 &= (x-3)^2 \\ 2 &= x-3 \\ 5 &= x \end{aligned}$$

check:

$$\begin{aligned} 2(5-3)^2 - 8 \\ 2(2)^2 - 8 \\ 2(4) - 8 \\ 8 - 8 \\ 0 \end{aligned}$$

Excellent

$$+2 = x - 3$$

missing one solution

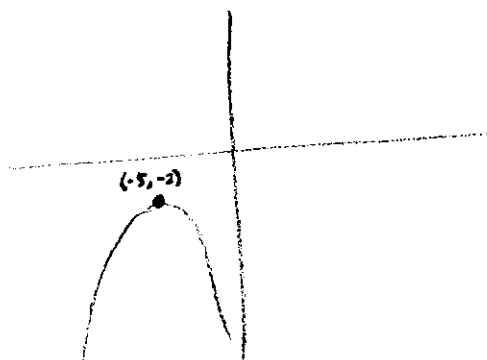
Nil

2) For the following function, identify the a) Range as well as the b) Interval of increase (sketching out the function is recommended)

$$f(x) = -(x + 5)^2 - 3$$

a) Range: $-\infty, -3$

b) Int. of Inc.: $-\infty, -5$



Om